



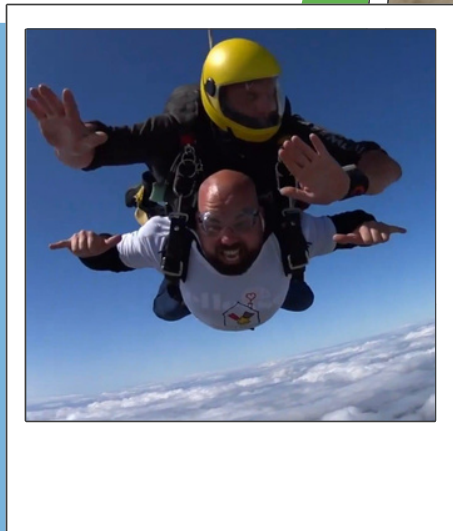
Ronald McDonald
House Charities™
United Kingdom

Keeping families close™

Be Inspired



Tips and ideas to help start your fundraising journey



www.rmhc.org.uk



Registered with
FUNDRAISING
REGULATOR

Thank you for Fundraising !

We are delighted that you have chosen to join us in our mission to offer a comforting 'home away from home' for families while they have a child in hospital. Your decision to support Ronald McDonald House Charities UK means the world to us, as it enables us to provide a warm and supportive environment for families facing challenging times.

Together, we can create a sense of belonging and comfort for families when they need it the most. Thank you for being a part of our community and for helping us make a positive impact on the lives of others.

Here's how
your support
could help us



£35



Could accommodate one family for one night

£100



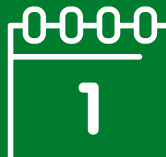
Could provide one day of electricity in one of our Houses, meaning families can shower, cook dinner, and stay warm and cosy

£50



Could pay for bed linen, which will allow for a family's cosy and comfortable night's rest after a long day at the hospital with their sick child.

£500



Could pay for a House Assistant in one of our Houses for a whole week, providing families with much needed support

Your Fundraising Journey

Start

Choose your desired activity, pick a date and location

Stuck for ideas?
Check out some of our ideas on page 5 for inspiration

Set up a Just Giving page - there is further information on how to do this on page 6

Keep track of everything you need to do with our handy print-out on page 7

Share your fundraising story on social media!
Don't forget to use:
#RMHCUK
on your photos



Take a look at our fundraising FAQs on page 8.

Your Community Fundraiser can also help with advice

Finish

Keep sharing your story!

When your fundraising event is completed you will find your paying in information on page 11

Message From Kitty and Jack's Family

Hayley and Heather Timson stayed at Ronald McDonald House Brighton for four months after their twins, Kitty and Jack, were born at just 26 weeks gestation with Jack weighing 2lb 1oz and Kitty just 2lbs.



It was a big shock to have the twins so early but initially, they were doing OK. When they were six weeks old, however, Jack got some bowel complications, and we were transferred to Brighton Hospital where he had a life-saving operation to remove 50 per cent of his bowel.

We were living in Redhill in Surrey at the time, around 45 minutes' drive away from Brighton. That's why we were so relieved when we were offered lovely, free accommodation at the Ronald McDonald House. Staying at the Ronald McDonald House meant that Kitty could be with us, and we were all together as a family. It was like a 'home away from home'. The staff and volunteers, who became our 'extended family', were just incredible.

The facilities meant that we could do our own cooking and laundry and live as normally as possible, all while being just a stone's throw away from our critically ill baby.



-Hayley, Kitty and Jack's mum

Kitty and Jack wanted to do something truly special to mark their 10th birthday and chose to do something to support Ronald McDonald House Charities UK.

Their innovative spirit shone through as they organised a series of delightful events, showcasing their handmade crafts and even hosting interactive workshops where they taught other children the art of jewellery-making.

With every bead strung and every craft sold, Kitty and Jack's fundraiser gained momentum, raising an incredible total of £1,306. This generous sum translates to 37 nights of accommodation for families in need, offering them comfort and support during challenging times.

Kitty and Jack's story is a testament to how small hands can make a big difference to the well-being of families like theirs. Through their creativity and hard work, they have not only raised funds but also spread a message of hope and kindness.

Fundraising Ideas

Stuck for fundraising ideas? We couldn't let that stop you doing something great to help enable families to stay close to their sick child. That's why we've put together this handy list of ideas to get you started and get those donations rolling in.

Jumble Jamboree

Join our Jumble Jamboree community and raise funds to support our Houses by selling your old stuff. Environmentally friendly, easy to organise and loads of fun, we're on a mission to get the nation jumbling for us!



[Find out more](#)



Quiz Night

Who doesn't love a quiz? Host an unforgettable quiz night for family and friends! Tailor each round to your event's theme for a personal touch. Ask for entry fee donations to support families with children in hospital.

PJ Day

Choose a day that suits you and pop on your cosiest PJs and slip on your best slippers to support Ronald McDonald House Charities UK! By making a donation you can help us keep families close to their child in hospital across the UK.



[Find out more](#)



Bucket Collection

Whether at a family gathering, within your community, at school, or in the workplace, a bucket collection is an easy and effective way to raise money. This simple act can provide essential funds to support families with children in hospital.

Creating a JustGiving Page

Step 1

Setting up an account

Go to www.justgiving.com and click on the 'start fundraising' button in the middle of the page. You will be redirected to the page shown in the image below. Click on the 'fundraising for a charity' button. Click on the 'sign up' button or log in if you have a JustGiving login. Either log in with Facebook or fill in your email address, name and create a password. Complete your profile by entering your address.



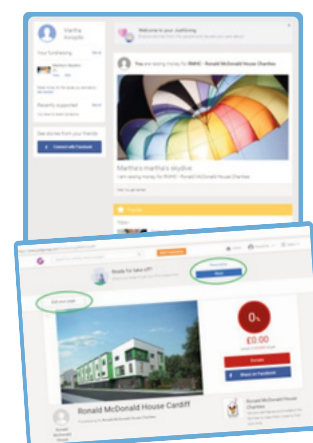
Step 5

Promoting your event and tracking your donations

Congratulations on completing your JustGiving page! Now, let's get the word out and start raising funds.

Share your page on social media including Facebook and Twitter. You can edit your page at any time and update your supporters with your progress. To make changes, simply click the 'home' button, then 'edit.' This will also let you share your page on social media, email your contacts, and add a 'sponsor me' button to your email signature.

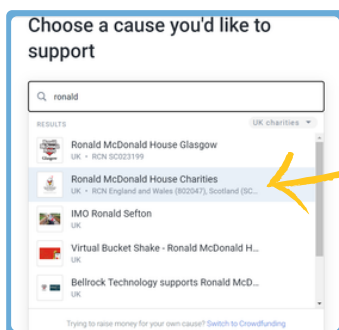
You can also set up Just Text Giving, allowing people to donate via text, and track all your donations in one place. Happy fundraising!



Step 2

Choosing Ronald McDonald House Charities UK

Enter Ronald McDonald House Charities into the search bar and select Ronald McDonald House Charities, as shown in the image below.



Fundraising for Ronald McDonald House Charities UK means that you will be helping us to support families across all 14 of our Houses

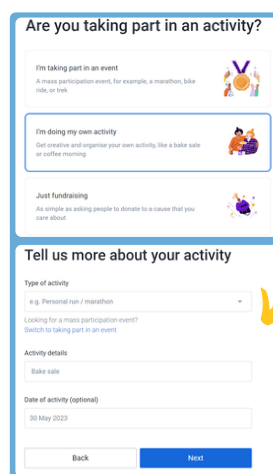
Step 3

Selecting your event

You'll be directed to a new page where you can select the type of event you're participating in. If you're fundraising for multiple reasons, pick the option that fits best.

After choosing your event type, you'll need to provide some details: the event name, date, and a web address for your JustGiving page.

Remember, this web address will be the same for all your events, so choose something general like <http://www.justgiving.com/yourname>.



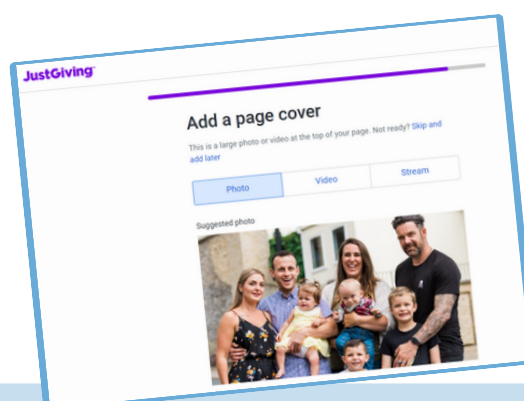
Step 4

Personalising your page

Here is your chance to really engage your supporters by adding meaningful, personal information about your event, including:

- Why you are fundraising
- How much you intend to raise
- A photo of you!

When you have finished personalising your page, click 'save and continue'





Print out this page and use it to keep on top of all your fundraising activities

To Do List

- Registered my fundraising _____
- Contact Community Fundraiser _____
- _____
- _____
- _____
- _____
- _____
- _____
- _____
- _____
- _____
- _____
- _____
- _____

Notes

If you need buckets, t-shirts or other materials, contact your Community Fundraiser

Focus



Remember

Your Community Fundraiser is here to support you throughout your fundraising journey.

Fundraising Q&A's

Do I need permission from my local authority to fundraise?

If you are doing a bucket collection, the regulations for fundraising on private and public property are different and you may need permission. Find out more here: www.fundraisingregulator.org.uk/guidance/topics/cash-collections

Do I need a raffle licence?

If you decide to do a raffle or a prize draw you might need a raffle licence. Speak to your Community Fundraiser for more information.

Do I need public liability?

You may need public liability for your event and for a first aider to attend. Check with your venue and insurer.

Always check your contractors have their own liability insurance. They may ask for a risk assessment

Can I use your logo?

We have a specially designed 'In Aid Of' version of our logo that all of our supporters are welcome to use when creating their own materials.

Your Community Fundraiser will be able to send you versions of this logo and provide any further support.

Do I need an alcohol licence?

If you are serving alcohol at your event you will need an alcohol licence. Find out more here:

www.gov.uk/guidance/alcohol-licensing

When do I send you the donation?

We kindly request all funds are sent to us no later than six weeks post fundraising event.

This helps us to keep on track of fundraising and ensures the Houses have the money they need.

How we recognise your support

< £500

CERTIFICATE

Every donation is important to us and we recognise each of these with a personal thank you or certificate



PAY FOR A DAY

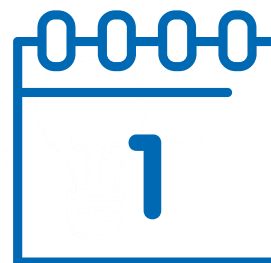
Speak to your Community Fundraiser about the costs for your local House



GIVING TREE

> £500

A personalised disc on a Giving Tree in the House of your choosing to recognise your support



ADOPT A ROOM

£5000

Adopt a room in your chosen House for one year



Challenge yourself with #TeamRMHCUK

Run, walk, cycle or bounce all whilst raising money to give families with children in hospital somewhere to stay close by. Check out our exciting Challenge Events calendar.



Give a Regular Gift

A regular donation can help us build a reliable income which means that we can plan for the future. Giving as little as £10 a month could fund three nights' accommodation for a family every year.



Leave a legacy

A gift in your will could help us to support thousands more children and families who need us, now and in the future.

OTHER WAYS TO HELP

Give Your Time

Volunteering is a great way to use your skills and meet new people, while making a difference to families staying with us in our Houses. Whether you can help out for an hour or a day, we're here to help find the right role for you.



Nominate us

Whether it's for a coin scheme at your local supermarket, introducing us to a school or golf club, or even for Charity of the Year at your work place.

Get your company involved

Can your company offer financial support? This may be by making us your Charity of the Year, offering a Community Impact Grant or Match Funding. We'd welcome the opportunity to discuss ways your company can support us.



Want to fundraise for us but still not sure what you could do? Contact our supporter care team who will be able to provide further information:

rmhc.supportercare@uk.mcd.com

Paying in your funds

Thank
you

DONATE

You can pay your money in directly via our website: www.rmhc.org.uk/donate
Please include your supporter reference number regarding your fundraising efforts.

BANK TRANSFER

Please contact our Supporter Care team who will be able to share our bank details with you:

 rmhc.supportercare@uk.mcd.com  **03000 111 113**

Once you have registered your fundraising with us, you will be given a reference number.
Please use that in relation to all deposits to the Charity so we can keep an accurate record of your fundraising total

JUSTGIVING

Our top priority is providing exceptional support to our families, and we want to make fundraising as efficient as possible. That's why we encourage you to use JustGiving, our preferred online platform. **By fundraising through JustGiving, we spend less time on administrative tasks and more time offering the vital services families need.**

CHEQUE

Post your cheques with details of how the funds were raised to:
Ronald McDonald House Charities UK (Sutton Coldfield Office)
6 Victoria Road,
Sutton Coldfield,
Birmingham
B72 1SY

Cheques should be made payable to: **'Ronald McDonald House Charities UK'**

When creating your JustGiving page, make sure you add your personal details to the required boxes. This helps us to contact you.

IN PERSON

Speak to your Community Fundraiser regarding dropping off cash donations. **Be sure to leave as much information as possible regarding your fundraising and details.**

For paying over the phone please call 03000 111 113 (please do not post cash, contact your Community Fundraiser)



If you are returning sponsorship money, please also include your sponsorship forms so that we can claim Gift Aid on your sponsor's donations.



Ronald McDonald
House Charities™
United Kingdom



Thank you