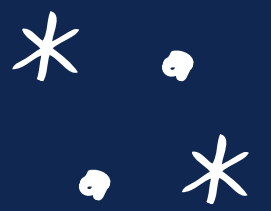
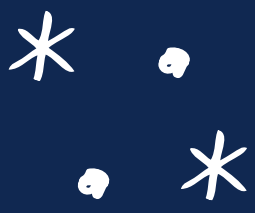


Edinburgh Carol Concert Sponsorship Opportunities



Tuesday 14 December, 7pm-8:30pm

Join Ronald McDonald House Charities UK for a family-friendly festive evening at St. Giles' Cathedral featuring the Phoenix Choir.

In March 2021, our Edinburgh House officially opened and we are thrilled to welcome supporters and families to join our festive evening.

We look forward to seeing you safely after staying home in 2020. We are ready for a great sing along and we hope you are too.



**Ronald McDonald
House Charities™**
United Kingdom

Keeping families close™

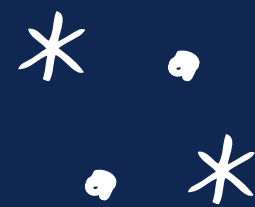
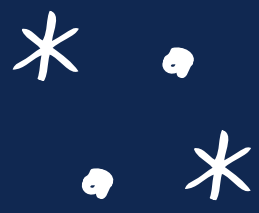


Ronald McDonald House Charities UK is an independent charity registered in England and Wales (802047) and in Scotland (SC040717).



Address
St Giles' Cathedral
High Street
Edinburgh
EH1 1RE

The Carol Concert



Our fantastic Carol Concert is back this year, held by Ronald McDonald House Charities UK's House here in Edinburgh in the iconic and beautiful St. Giles Cathedral in the heart of the city. We are proud to be supported by the amazing Phoenix Choir, who will perform songs from upbeat, fun and quirky jams to the beautiful Christmas songs we know and love.

This is no ordinary Carol Concert. We aim to give guests a fun and interactive evening with singalongs and entertainment throughout, as well as special readings and talks from families who have benefited from our Houses.

Oh and don't forget the delicious refreshments and hot cider to warm your cockles!

This festive night is a great opportunity to promote your brand in front of other key business personnel, charity supporters and their guests. The cathedral can seat an audience of up to 500. Likewise, this event is also a fantastic evening out for friends and family, as well as the perfect opportunity to show your support for our Charity.



* . About RMHC UK * .

Our Edinburgh House is the first Ronald McDonald House Charities UK, House in Scotland. We house families who have sick children receiving specialist care in hospital. Edinburgh is our 12th House across the United Kingdom and we are proud to have opened during the pandemic when we were needed the most.

Our Houses are just a stone's throw away from their respective hospitals, and like our House here in Edinburgh, some Houses are even inside the hospitals themselves. We aim to alleviate the many stresses families go through when their child is in hospital by providing 'home away from home' care 24 hours a day, 365 days a year.

As an independent charity, we rely on the support and generosity of our volunteers, fundraisers and donors. Thanks to their tireless efforts, the Houses are able to help over 6,000 families each year. It is our mission to ensure we have sufficient funds and expertise to develop and sustain free accommodation at every specialist children's hospital in the UK. This will allow us to help thousands more families stay together, while their child is in hospital, in the years to come.



Headline Sponsor

£1,000

Pre-Event

- Your logo on all marketing materials for the event including event programme.
- Up to 25 complimentary tickets for colleagues, friends and family.
- Dedicated social media posts on RMHC UK Edinburgh House Channel to announce your sponsorship.
- Acknowledgement as Event Partner and official quote in all media releases and social media posts prior to the event, with a hyperlink to your company website.
- Opportunity to have a private tour of Ronald McDonald House, Edinburgh (can also be arranged post event).

At Event

- Reserved seats in a prominent, near stage location (to be agreed with sponsor).
 - Front or back full page advert in event programme.
- Dedicated area of Cathedral to display company banners and any other promotional materials.
- Acknowledgement and thanks as Headline Sponsor in Charity representative's speech
 - Opportunity to give Christmas reading at the event.

Post Event

- Permission to use RMHC UK logo on your company website and marketing materials in relation to the event and/or Charity support examples (use to be agreed with RMHC UK Marketing in advance).
- Unrestricted access to event photos for promotional use.
- Corporate branding carried on all post-event communications material highlighting your organisation as the Headline Sponsor.

Production Sponsor

£750

Pre-Event

- Dedicated social media posts on RMHC UK Edinburgh House Channel to announce your sponsorship.
- Acknowledgement as Event Partner and official quote in all media releases and social media posts prior to the event, with a hyperlink to your company website.
- Opportunity to have a private tour of Ronald McDonald House, Edinburgh (can also be arranged post event).

At Event

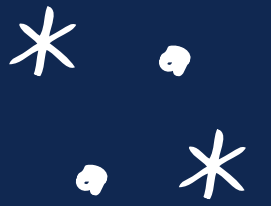
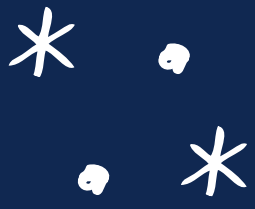
- Five complimentary seats in a prominent, near stage location.
- Company branding in prime locations across event venue (options to be discussed).
- Acknowledgement and thanks as Event Partner in Charity representative's speech.
- Half page advert in event programme.
- Sponsorship credit on key design and print materials eg. Tickets and posters.

Post Event

- Permission to use RMHC UK logo on your company website and marketing materials in relation to the event and/or Charity support examples (use to be agreed with RMHC UK Marketing in advance).
- Unrestricted access to event photos for promotional use.
- Corporate branding carried on all post-event communication materials highlighting your organisation as the Production Sponsor.

Print Sponsor

£500



Pre-Event

- Dedicated social media posts on RMHC UK Edinburgh House Channel to announce your sponsorship.
- Acknowledgement as Event Partner and official quote in all media releases and social media posts prior to the event, with a hyperlink to your company website.
- Opportunity to have a private tour of Ronald McDonald House, Edinburgh (can also be arranged post event).

At Event

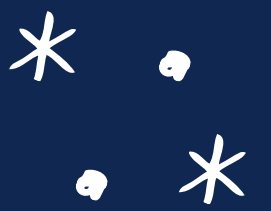
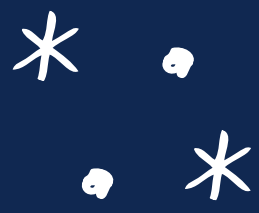
- Five complimentary seats in a prominent, near stage location.
- Company branding in prime locations across event venue (options to be discussed).
- Acknowledgement and thanks as Event Partner in Charity representative's speech.
 - Half page advert in event programme.
- Sponsorship credit on key design and print materials eg. Tickets and posters.

Post Event

- Permission to use RMHC UK logo on your company website and marketing materials in relation to the event and/or Charity support examples (use to be agreed with RMHC UK Marketing in advance).
- Unrestricted access to event photos for promotional use.
- Corporate branding carried on all post-event communication materials highlighting your organisation as the Print Sponsor.

Refreshment Sponsor

£500



Pre-Event

- Dedicated social media posts on RMHC UK Edinburgh House Channel to announce your sponsorship.
- Acknowledgement as Event Partner and official quote in all media releases and social media posts prior to the event, with a hyperlink to your company website.
- Opportunity to have a private tour of Ronald McDonald House, Edinburgh (can also be arranged post event).

At Event

- Five complimentary seats in a prominent, near stage location.
- Company branding in prime locations across event venue (options to be discussed).
- Acknowledgement and thanks as Event Partner in Charity representative's speech.
- Half page advert in event programme.
- Sponsorship credit on key design and print materials eg. Tickets and posters.

Post Event

- Permission to use RMHC UK logo on your company website and marketing materials in relation to the event and/or Charity support examples (use to be agreed with RMHC UK Marketing in advance).
- Unrestricted access to event photos for promotional use.
- Corporate branding carried on all post-event communication materials highlighting your organisation as the Refreshments Sponsor.

Advertisements

Full Page Advertising	£100	Limited to 1 per industry
Half Page Advertising	£75	Limited to 1 per industry
Logo in Event Programme	£50	Limited to 1 per industry

Please note that all sponsorship opportunities are negotiable and can be tailored to suit your organisation.

For more information about how you can support, or to discuss options please contact:

**Kathryn Tighe, Corporate Partnerships on email:
Kathryn.tighe@uk.mcd.com**

**Thank You
for your support!**